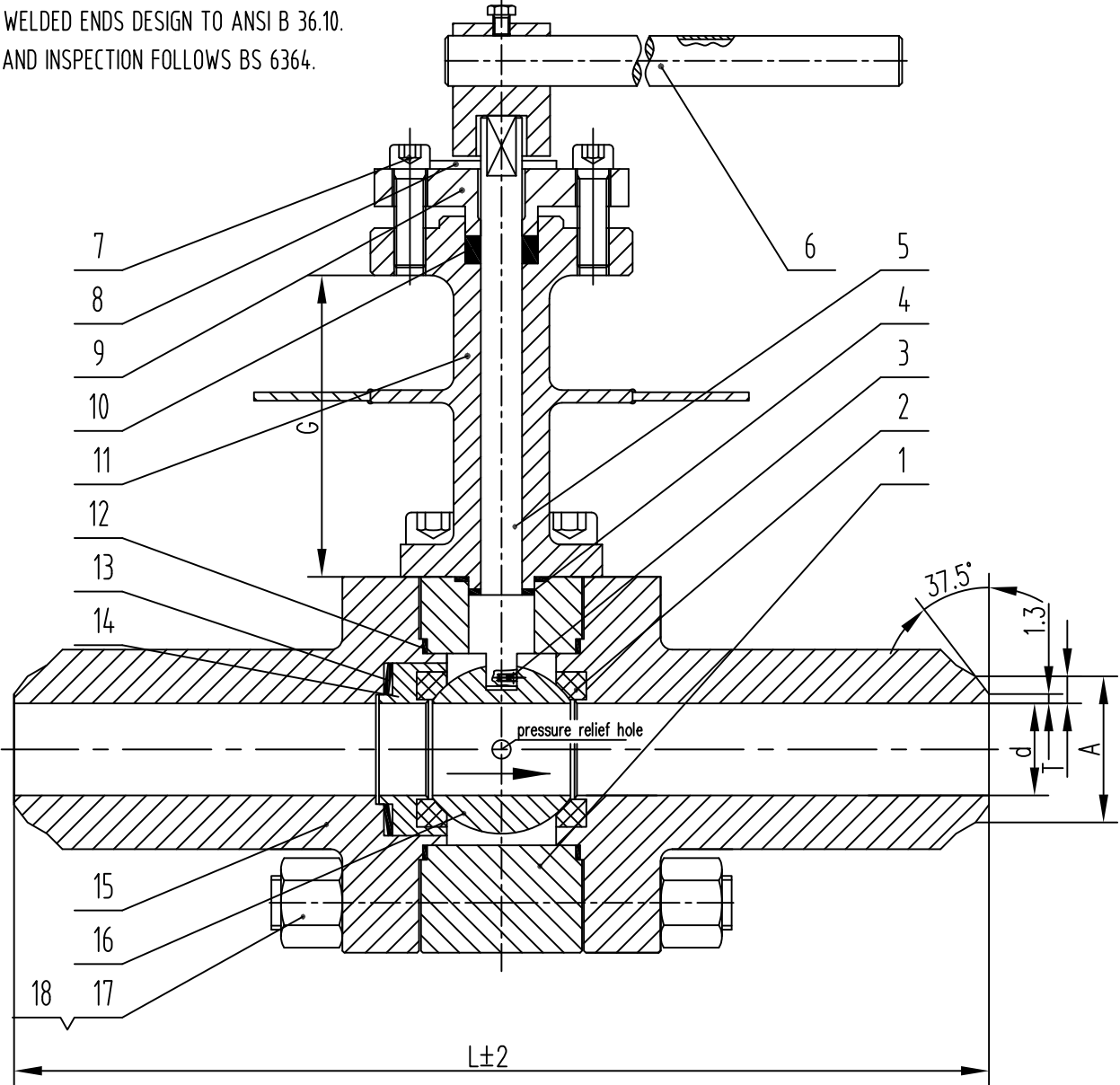


THE DESIGNING AND MANUFACTURING WORK FOLLOWS BS 5351.

BUTT WELDED ENDS DESIGN TO ANSI B 36.10.

TEST AND INSPECTION FOLLOWS BS 6364.



18	NUT	ASTM A194 8M
17	STUD BOLTS	ASTM A320 B8M
16	BALL	ASTM A182 F316L
15	BONNET	ASTM A182 F316L
14	SAET RING	ASTM A182 F316L
13	SPRING	INCONEL X-750
12	MIDDLE GASKET	SS316+GRAPHITE
11	YOKE	ASTM A182 F316L
10	PACKING	GRAPHITE
9	GLAND	ASTM A182 F316L
8	POSITIONING PLATE	SS
7	SCREW	ASTM A320 B8M
6	LEVER	ASTM A182 F304+SS304
5	STEM	XM-19
4	LOWER GASKET	PTFE
3	SPRING	INCONEL X-750
2	SEAT RING	PCTFE
1	BODY	ASTM A182 F316L
NO	PARTS NAME	MATERIAL

CLASS	PRESSURE TEST (MPa)		
	SHELL TEST	SEAT TEST	AIR TEST
300LB	7.5	5.5	0.6
APPLICABLE TEMPERATURE		196~120°C	
APPLICABLE MEDIA			
Wenzhou Sn-Joe Flow Tech Equipment Co., Ltd.			
BALL VALVE	DATE	20180306	