

专注熔断器研发制造
Focus On Fuse Development And Production

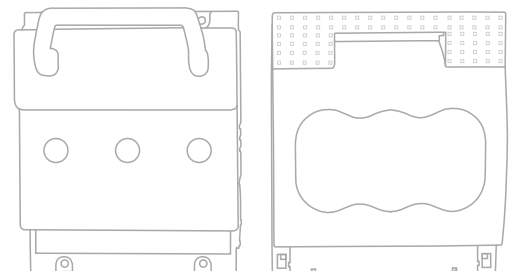
FRSI 弗而兹电气



NH&NT/RT18/FHR17/FHR6

产品选型手册

Product Selection Guide





企业简介

Company Profile

我们是谁？

浙江弗而兹电气科技有限公司（以下简称弗而兹电气）是一家新成立的高技术公司。公司主营生产产品为低压熔断器和隔离开关，覆盖电力、通信、新能源等领域。公司秉承德国和日本的经营理念，以市场为主导，专注于电力保护行业的细分市场，即熔断器保护，做精做专，力争成为全国乃至全球领先的熔断器保护服务商。

我们为社会带来什么？

为客户创造价值，为行业注入新鲜血液和活力。弗而兹电气积极开拓市场合作伙伴，坚持以市场为导向，技术为支持，以市场带领技术，以技术服务市场的原则，为电力、通信和新能源行业提供可靠的、与时俱进的熔断器保护解决方案。

推动产业良性发展。弗而兹电气主张开放、合作、共赢，与客户合作伙伴及友商合作创新，积极参与和支持行业主流标准和新标准的制定，为产业发展贡献自己的力量。推动社会可持续发展。作为负责任的企业公民，弗而兹电气始终坚持和响应国家的环保号召，在生产过程中尽全力消除污染，最终实现无污染。弗而兹电气投身于开发新能源电动汽车电池保护用熔断器和充电桩保护用熔断器，为新能源汽车的安全提供可靠的产品和技术支持，从而推动新能源汽车行业的发展，实现降低汽车污染的目标。

为奋斗者提供舞台。弗而兹电气为所有奋斗的员工提供一个公平竞争的舞台，以责任贡献来评价和提升员工，使有才华有能力有担当的人才，能够快速成长，实现自我价值。

我们坚持什么？

弗而兹电气坚持聚焦在自己的专业领域，抵制其他诱惑，不走捷径，拒绝机会主义，踏踏实实，放眼未来，厚积薄发；坚持以客户为中心，以市场为中心，以技术为中心，艰苦奋斗，勇闯未来。

Who we are?

Zhejiang FRSI Electric Technology Co.,Ltd. is a leading company in the electrical fuse and switch industry. We focus on designing, manufacturing and selling electrical fuse and fuse-switch-disconnector. We also provide fuse protection solutions for our clients.

What we bring to clients and society?

We create values for our clients, and bring fresh energy to the industry. We are proud to be recognized by markets, and believe that the spirit of engineering and craftsman will lead us to a further success.

We promote development for the industry. We always propose more corporation and finally achieve an all-win result. Thus, we proactively participate in most of the industrial activities, to contribute our efforts.

We insist the sustainable development to society. As a responsible corporate citizen, we are trying our best to eliminate the pollution during the production, and provide products which are environment-friendly to our clients.

What do we insist on?

We provide an impartial platform for our employees. We are more concerned on the personality of our employees, and encourage them to be more innovative and effective. Employees are evaluated and promoted by their contribution to the company, such as innovation, concentration and professionalism. We, FRSI, will always look forward to the corporation with you!

目录 CONTENTS



方型有填料刀形触头熔断器系列
Square Body Fuses With Knife Contacts And Sand Filling
NH&NT系列熔断体/熔断座
NH&NT Series

01~09 | PAGE



圆筒形帽有填料熔断器系列
Fuses With Cylindrical Contact Caps And Sand Filling
RT18系列熔断体/隔离开关&底座
RT18 Series

10~12 | PAGE



熔断器式隔离开关系列
Fuse-Switch-Disconnecter
FHR17系列熔断器式隔离开关
FHR17 Series

13~16 | PAGE



熔断器式隔离开关系列
Fuse-Switch-Disconnecter
FHR6系列熔断器式隔离开关
FHR6 Series

17~20 | PAGE



10kV一体化柱上变台专用熔断器及熔断器式隔离开关
Fuse Links&Fuse-Switch-Disconnecter
For 10kV Concrete Poles Transformer Platform Integrated
FNHJ熔断器&FHR17母线式隔离开关
FNHJ&FHR17 Series

21~23 | PAGE

NH&NT

方型有填料刀形触头熔断器系列

Square Body Fuses With Knife Contacts And Sand Filling



全球通用 Globally Designed

一种设计，一个系列，适合所有电力设备生产商使用
One design, one series, suitable for being used by all power equipment manufacturers



可单/双指示设计 With Indication

提供单双指示设计，准确识别熔断器动作显示
Provide single and double indication, which can accurately identify the fuse breaking



低能耗设计 Low Power Dissipation

NH&NT系列产品拥有行业内最低能耗设计，更加节能环保
NH&NT series products have the lowest energy consumption design in the fuse industry, which is more energy-saving and eco-friendly.



更好的散热 Efficient Head Dissipation

方型熔管设计提供了更大的散热面积，从而拥有更好的散热
Square design of fuse link provides larger heat dissipation area for better heat dissipation



配备底座和隔离开关

Geard With Fuse Base/Fuse-switch-disconnector
FRSI提供NH系列熔断器配合使用的所有底座和隔离开关以及附件，满足客户的所有需求。

FRSI offers all mounting bases, switch-disconnectors and accessories for matching with NH series fuse links to meet all needs of customers.

产品概述 General Description

NH&NT系列熔断器是由熔断体和熔断体底座组成，其中熔断体由变截面熔体封装于高强度陶瓷的熔管内，熔管中充满化学处理过的高纯度石英砂作为灭弧介质；熔体采用复杂工艺制作而成，具有分断能力高，限流特性好，功耗低等特点；产品可用NH&NT插拔手柄将熔断体拔出底座。

NH&NT fuse is consisted of fuse link and fuse base. The fuse link is made up of fuse element with variable cross section which is enclosed in fuse tube of high strength ceramics. The fuse tube is filled with special quartz sands in a particular density, acting as an arc extinguish media. The fuse is of high breaking capacity, perfect current cutting off characteristic and low power dissipation. The fuse is also provided with fuse carrier.

规格参数 Specifications

额定电压Rated Voltage: AC500V、AC400V、DC250V、DC440V
功能等级Utilization Category: gL/gG aM gB gTR
分断能力Breaking Capacity: AC=120kA, DC=100kA

符合标准 Standard

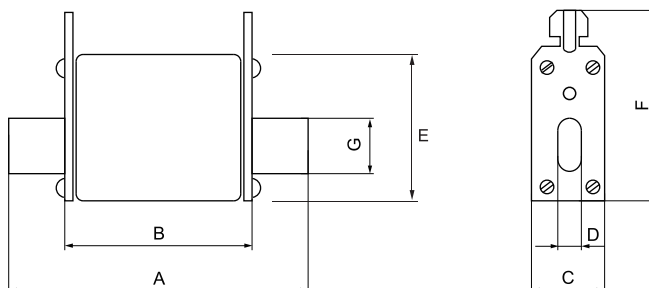
GB/T13539.2
IEC60269-2

NH系列有填料方管刀型触头熔断体

NH Series Square Body Fuses With Knife Contacts And Sand Filling



型号 Type	尺码 Size	订货号 Order No.	额定电压(V) Rated Voltage	电流等级(A) Rated Current	尺寸Dimension(mm)						
					A	B	C	D	E	F	G
NH000 NT000	000	2NH50AG000F	AC500	2	78	54	21	6	40	53	15
		4NH50AG000F	AC500	4							
		6NH50AG000F	AC500	6							
		8NH50AG000F	AC500	8							
		10NH50AG000F	AC500	10							
		16NH50AG000F	AC500	16							
		20NH50AG000F	AC500	20							
		25NH50AG000F	AC500	25							
		32NH50AG000F	AC500	32							
		36NH50AG000F	AC500	36							
		40NH50AG000F	AC500	40							
		50NH50AG000F	AC500	50							
		63NH50AG000F	AC500	63							
		80NH50AG000F	AC500	80							
100NH50AG000F	AC500	100									





型号 Type	尺码 Size	订货号 Order No.	额定电压(V) Rated Voltage	电流等级(A) Rated Current	尺寸Dimension(mm)						
					A	B	C	D	E	F	G
NH00	00	2NH50AG00F	AC500/DC250/DC440	2	78	54	30	6	48	61	15
		4NH50AG00F	AC500/DC250/DC440	4							
		6NH50AG00F	AC500/DC250/DC440	6							
		8NH50AG00F	AC500/DC250/DC440	8							
		10NH50AG00F	AC500/DC250/DC440	10							
		16NH50AG00F	AC500/DC250/DC440	16							
		20NH50AG00F	AC500/DC250/DC440	20							
		25NH50AG00F	AC500/DC250/DC440	25							
		32NH50AG00F	AC500/DC250/DC440	32							
		36NH50AG00F	AC500/DC250/DC440	36							
		40NH50AG00F	AC500/DC250/DC440	40							
		50NH50AG00F	AC500/DC250/DC440	50							
		63NH50AG00F	AC500/DC250/DC440	63							
		80NH50AG00F	AC500/DC250/DC440	80							
		100NH50AG00F	AC500/DC250/DC440	100							
		125NH50AG00F	AC500/DC250/DC440	125							
160NH50AG00F	AC500/DC250/DC440	160									



型号 Type	尺码 Size	订货号 Order No.	额定电压(V) Rated Voltage	电流等级(A) Rated Current	尺寸Dimension(mm)						
					A	B	C	D	E	F	G
NH0	0	2NH50AG0F	AC500	2	125	75	30	6	48	61	15
		4NH50AG0F	AC500	4							
		6NH50AG0F	AC500	6							
		8NH50AG0F	AC500	8							
		10NH50AG0F	AC500	10							
		16NH50AG0F	AC500	16							
		20NH50AG0F	AC500	20							
		25NH50AG0F	AC500	25							
		32NH50AG0F	AC500	32							
		36NH50AG0F	AC500	36							
		40NH50AG0F	AC500	40							
		50NH50AG0F	AC500	50							
		63NH50AG0F	AC500	63							
		80NH50AG0F	AC500	80							
		100NH50AG0F	AC500	100							
		125NH50AG0F	AC500	125							
160NH50AG0F	AC500	160									

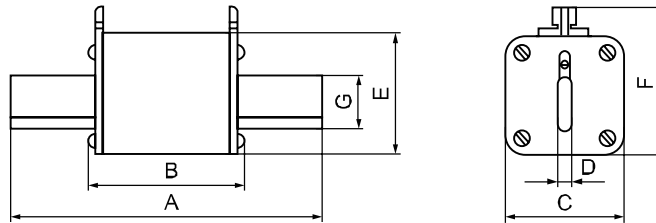


型号 Type	尺码 Size	订货号 Order No.	额定电压(V) Rated Voltage	电流等级(A) Rated Current	尺寸Dimension(mm)						
					A	B	C	D	E	F	G
NH1	0	40NH50AG1CF	AC500/DC250	40	135	75	30	6	48	65	15
		50NH50AG1CF	AC500/DC250	50							
		63NH50AG1CF	AC500/DC250	63							
		80NH50AG1CF	AC500/DC250	80							
		100NH50AG1CF	AC500/DC250	100							
		125NH50AG1CF	AC500/DC250	125							
		160NH50AG1CF	AC500/DC250	160							
	1	40NH50AG1F	AC500/DC440	40	135	75	48	6	48	65	20
		50NH50AG1F	AC500/DC440	50							
		63NH50AG1F	AC500/DC440	63							
		80NH50AG1F	AC500/DC440	80							
		100NH50AG1F	AC500/DC440	100							
		125NH50AG1F	AC500/DC440	125							
		160NH50AG1F	AC500/DC440	160							
NH2	1	80NH50AG2CF	AC500/DC440	80	150	75	48	6	48	69	20
		100NH50AG2CF	AC500/DC440	100							
		125NH50AG2CF	AC500/DC440	125							
		160NH50AG2CF	AC500/DC440	160							
		200NH50AG2CF	AC500/DC440	200							
		224NH50AG2CF	AC500/DC440	224							
		250NH50AG2CF	AC500/DC440	250							
	2	80NH50AG2F	AC500/DC440	80	150	75	58	6	58	73	25
		100NH50AG2F	AC500/DC440	100							
		125NH50AG2F	AC500/DC440	125							
		160NH50AG2F	AC500/DC440	160							
		200NH50AG2F	AC500/DC440	200							
		224NH50AG2F	AC500/DC440	224							
		250NH50AG2F	AC500/DC440	250							
315NH50AG2F	AC500/DC440	315									
400NH50AG2F	AC500/DC440	400									

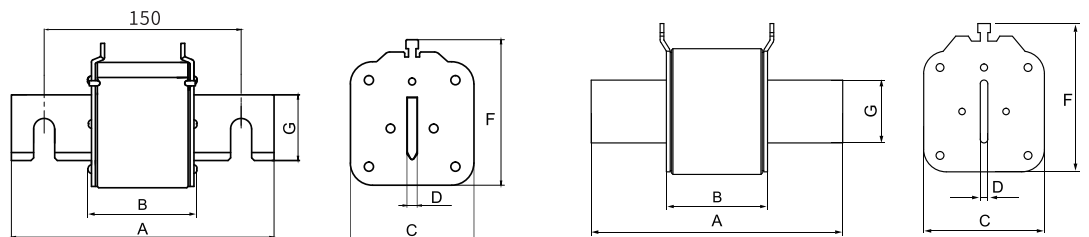




型号 Type	尺码 Size	订货号 Order No.	额定电压(V) Rated Voltage	电流等级(A) Rated Current	尺寸Dimension(mm)						
					A	B	C	D	E	F	G
NH3	2	200NH50AG3CF	AC500/DC440	200	150	75	58	6	58	82	25
		224NH50AG3CF	AC500/DC440	224							
		250NH50AG3CF	AC500/DC440	250							
		315NH50AG3CF	AC500/DC440	315							
		400NH50AG3CF	AC500/DC440	400							
	3	200NH50AG3F	AC500/DC440	200	150	75	68	6	68	83	32
		224NH50AG3F	AC500/DC440	224							
		250NH50AG3F	AC500/DC440	250							
		315NH50AG3F	AC500/DC440	315							
		355NH50AG3F	AC500/DC440	355							
400NH50AG3F		AC500/DC440	400								
NH3D	3	500NH50AG3F	AC500/DC440	500	150	75	68	6	68	83	32
		630NH50AG3F	AC500/DC440	630							
NH3D	3	800NH40AG3F	AC400	800	150	75	68	6	68	83	32



型号 Type	尺码 Size	订货号 Order No.	额定电压(V) Rated Voltage	电流等级(A) Rated Current	尺寸Dimension(mm)						
					A	B	C	D	F	G	
NH4	4	630NH50AG4AF	AC500/DC250/DC440	630	200	85	100	8	118	50	
		800NH50AG4AF	AC500/DC250/DC440	800							
		1000NH50AG4AF	AC500/DC250/DC440	1000							
		1250NH50AG4AF	AC500/DC250/DC440	1250							
		1600NH50AG4AF	DC440	1600							
NH4A	4	630NH50AG4AF	AC500	630	200	85	100	6	113	50	
		800NH50AG4AF	AC500	800							
		1000NH50AG4AF	AC500	1000							
		1250NH50AG4AF	AC500	1250							
		1500NH50AG4AF	AC500	1500							
		1600NH50AG4AF	AC500	1600							



NH4

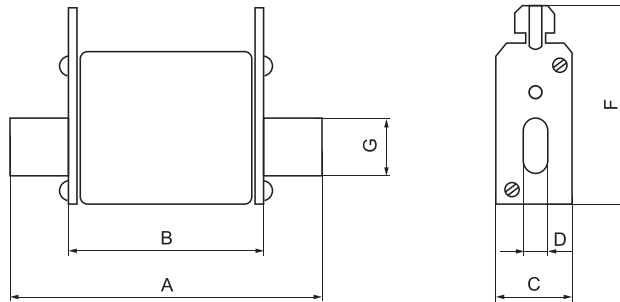
NH4a

NT系列有填料方管刀型触头熔断体

NT Series Square Body Fuses With Knife Contacts And Sand Filling



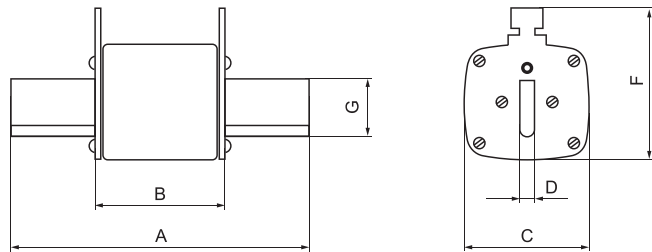
型号 Type	尺码 Size	订货号 Order No.	额定电压(V) Rated Voltage	电流等级(A) Rated Current	尺寸Dimension(mm)					
					A	B	C	D	F	G
NT00	00	2NT50AG00F	AC500/DC250/DC440	2	78	49	30	6	55.5	15
		4NT50AG00F	AC500/DC250/DC440	4						
		6NT50AG00F	AC500/DC250/DC440	6						
		8NT50AG00F	AC500/DC250/DC440	8						
		10NT50AG00F	AC500/DC250/DC440	10						
		16NT50AG00F	AC500/DC250/DC440	16						
		20NT50AG00F	AC500/DC250/DC440	20						
		25NT50AG00F	AC500/DC250/DC440	25						
		32NT50AG00F	AC500/DC250/DC440	32						
		36NT50AG00F	AC500/DC250/DC440	36						
		40NT50AG00F	AC500/DC250/DC440	40						
		50NT50AG00F	AC500/DC250/DC440	50						
		63NT50AG00F	AC500/DC250/DC440	63						
		80NT50AG00F	AC500/DC250/DC440	80						
		100NT50AG00F	AC500/DC250/DC440	100						
125NT50AG00F	AC500/DC250/DC440	125								
160NT50AG00F	AC500/DC250/DC440	160								



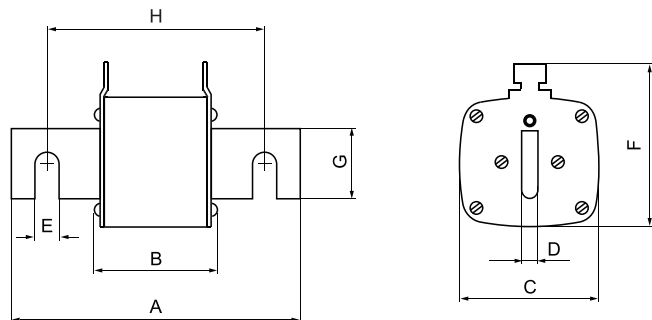
型号 Type	尺码 Size	订货号 Order No.	额定电压(V) Rated Voltage	电流等级(A) Rated Current	尺寸Dimension(mm)					
					A	B	C	D	F	G
NT0	0	2NT50AG0F	AC500	2	125	65	30	6	55.5	15
		4NT50AG0F	AC500	4						
		6NT50AG0F	AC500	6						
		8NT50AG0F	AC500	8						
		10NT50AG0F	AC500	10						
		16NT50AG0F	AC500	16						
		20NT50AG0F	AC500	20						
		25NT50AG0F	AC500	25						
		32NT50AG0F	AC500	32						
		36NT50AG0F	AC500	36						
		40NT50AG0F	AC500	40						
		50NT50AG0F	AC500	50						
		63NT50AG0F	AC500	63						
		80NT50AG0F	AC500	80						
		100NT50AG0F	AC500	100						
125NT50AG0F	AC500	125								
160NT50AG0F	AC500	160								



型号 Type	尺码 Size	订货号 Order No.	额定电压(V) Rated Voltage	电流等级(A) Rated Current	尺寸Dimension(mm)					
					A	B	C	D	F	G
NT1	1	80NT50AG1F	AC500/DC440	80	135	68	48	6	60	20
		100NT50AG1F	AC500/DC440	100						
		125NT50AG1F	AC500/DC440	125						
		160NT50AG1F	AC500/DC440	160						
		200NT50AG1F	AC500/DC440	200						
		224NT50AG1F	AC500/DC440	224						
NT2	2	125NT50AG2F	AC500/DC440	125	150	68	58	6	70	25
		160NT50AG2F	AC500/DC440	160						
		200NT50AG2F	AC500/DC440	200						
		224NT50AG2F	AC500/DC440	224						
		250NT50AG2F	AC500/DC440	250						
		315NT50AG2F	AC500/DC440	315						
NT3	3	200NT50AG3F	AC500/DC440	200	150	68	67	6	82	32
		224NT50AG3F	AC500/DC440	224						
		250NT50AG3F	AC500/DC440	250						
		300NT50AG3F	AC500/DC440	300						
		315NT50AG3F	AC500/DC440	315						
		355NT50AG3F	AC500/DC440	355						
		400NT50AG3F	AC500/DC440	400						
		630NT50AG3F	AC500/DC440	630						



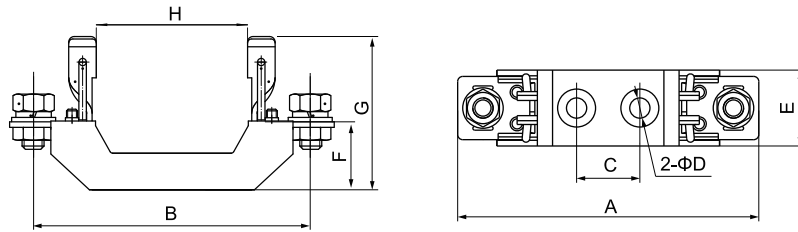
型号 Type	尺码 Size	订货号 Order No.	额定电压(V) Rated Voltage	电流等级(A) Rated Current	尺寸Dimension(mm)						
					A	B	C	D	E	F	G
NT4	4	630NT50AG4F	AC500/DC250/DC440	630	200	90	97	8	16.5	113	50
		800NT50AG4F	AC500/DC250/DC440	800							
		1000NT50AG4F	AC500/DC250/DC440	1000							
		1250NT50AG4F	AC500/DC250/DC440	1250							
		1600NT50AG4F	DC440	1600							



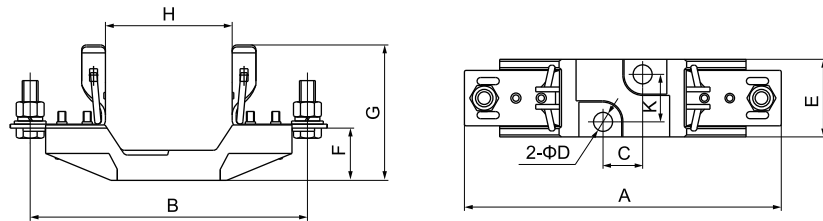
NH(NT)系列有填料方管刀型触头熔断座
Fuse Base For Square Body With Knife Contacts And Sand Filling Fuses



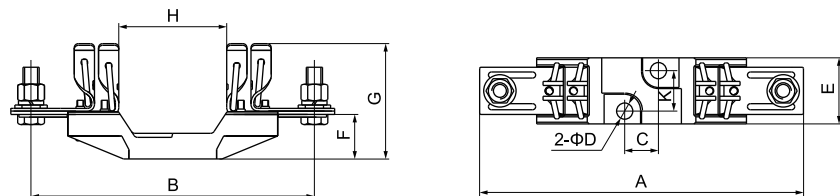
型号 Type	尺码 Size	订货号 Order No.	额定电压(V) Rated Voltage	电流等级(A) Rated Current	尺寸Dimension(mm)							
					A	B	C	ΦD	E	F	G	H
NH00(NT00)	00	160NHD50A00F	AC500/DC250	160	120	100	25	7.5	30	25	60	56
NH0(NT0)	0	160NHD50A0F	AC500	160	170	75	71	7.5	68	30	64	74



型号 Type	尺码 Size	订货号 Order No.	额定电压(V) Rated Voltage	电流等级(A) Rated Current	尺寸Dimension(mm)								
					A	B	C	ΦD	E	F	G	H	K
NH1(NT1)	1	250NHD50A1F	AC500/DC440	250	200	175	25	12	50	35	83	80	30
NH2(NT2)	2	400NHD50A2F	AC500/DC440	400	225	200	25	12	50	35	85	80	30

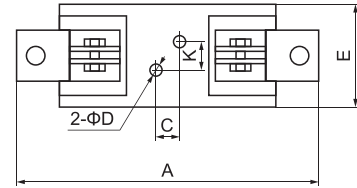
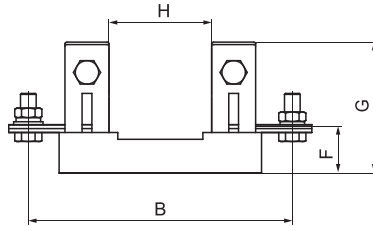


型号 Type	尺码 Size	订货号 Order No.	额定电压(V) Rated Voltage	电流等级(A) Rated Current	尺寸Dimension(mm)								
					A	B	C	ΦD	E	F	G	H	K
NH3(NT3)	3	630NHD50A3F	AC500/DC440	630	240	210	25	12	50	35	88	80	30





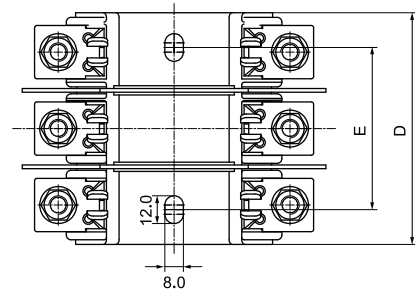
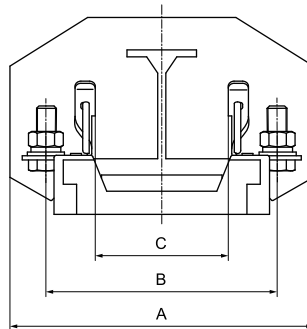
型号 Type	尺码 Size	订货号 Order No.	额定电压(V) Rated Voltage	电流等级(A) Rated Current	尺寸Dimension(mm)									
					A	B	C	ΦD	E	F	G	H	K	
NH4(NT4)	4	1250NTD50A4F	AC500/DC250	1250	310	270	45	10.5	88	50	134	105	30	



NH&NT模数化有填料方管刀型触头熔断座 NH&NT Modularized Fuse Base



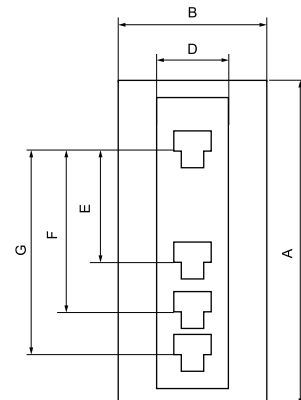
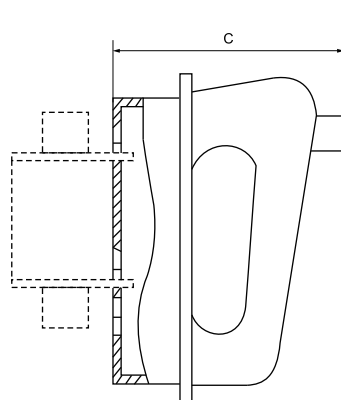
型号 Type	尺码 Size	订货号 Order No.	额定电压(V) Rated Voltage	电流等级(A) Rated Current	尺寸Dimension(mm)				
					A	B	C	D	E
NH00 NT00-3P	00	160NTD50A3PF	AC500/DC250	160	132	100	56.5	100	70



NT/NH/RT0熔断器载熔件手柄 NT/NH/RT0 Fuse Carrier



型号 Type	订货号 Order No.	额定电压(V) Rated Voltage	尺寸Dimension(mm)						
			A	B	C	D	E	F	G
NH/NT/RT0	H100A01F	AC1000	145	65	93	26	46	65	84



RT18

圆筒形帽有填料熔断器系列

Fuses With Cylindrical Contact Caps And Sand Filling



全球通用Globally Designed

一种设计，一个系列，适合所有电力设备生产商使用
One design, one series, suitable for being used by all power equipment manufacturers

低能耗设计Low Power Dissipation

RT系列产品拥有行业内最低能耗设计，更加节能环保
RT series products have the lowest energy consumption design in the fuse industry, which is more energy-saving and eco-friendly.

配备底座Geard With Fuse Base

FRSI提供RT系列熔断器配合使用的所有底座和隔离开关以及附件，满足客户的所有需求。

FRSI offers all mounting bases, switch-disconnectors and accessories for matching with NH series fuse links to meet all needs of customers.

产品概述 General Description

RT18系列熔断器是由熔断体和熔断体底座组成,其中熔断体由变截面熔体封装于高强度陶瓷的熔管内,熔管中充满化学处理过的高纯度石英砂作为灭弧介质;熔体采用复杂工艺制作而成,具有分断能力高,限流特性好,功耗低等特点;产品可用RT插拔手柄将熔断体拔出底座。

The RT18 series fuse is consisted of fuse link and fuse base. The fuse link is made up of fuse element with variable cross section or just a wire, either of which is enclosed in a fuse tube of high strength ceramics. The fuse tube is filled with special quartz sands in a particular density, acting as an arc extinguish media. The fuse is of high breaking capacity, perfect current cutting off characteristic and low power dissipation.

规格参数 Specifications

额定电压Rated Voltage: AC500V

功能等级Utilization Category: gL/gG aM gM grB

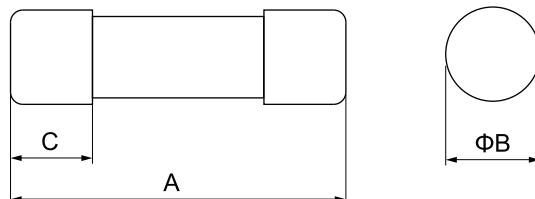
分断能力Breaking Capacity: I1=100kA

符合标准 Standard

GB/T13539.2 IEC60269-2

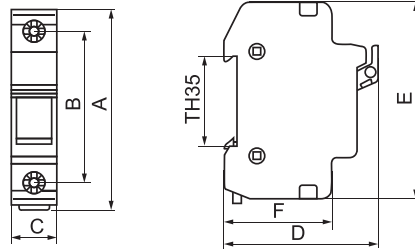


型号 Type	尺码 Size	订货号 Order No.	额定电压(V) Rated Voltage	电流等级(A) Rated Current	尺寸Dimension(mm)						
					A	ΦB	C				
RT18-32	10X38	1C50A10G38F	AC500	1	38	10.3	10				
	10X38	2C50A10G38F	AC500	2							
	10X38	4C50A10G38F	AC500	4							
	10X38	6C50A10G38F	AC500	6							
	10X38	8C50A10G38F	AC500	8							
	10X38	10C50A10G38F	AC500	10							
	10X38	16C50A10G38F	AC500	16							
	10X38	20C50A10G38F	AC500	20							
	10X38	25C50A10G38F	AC500	25							
	10X38	32C50A10G38F	AC500	32							
RT18-63	14X51	2C50A14G51F	AC500	*2	51	14.3	12				
	14X51	4C50A14G51F	AC500	*4							
	14X51	6C50A14G51F	AC500	*6							
	14X51	10C50A14G51F	AC500	*10							
	14X51	16C50A14G51F	AC500	16							
	14X51	20C50A14G51F	AC500	20							
	14X51	25C50A14G51F	AC500	25							
	14X51	32C50A14G51F	AC500	32							
	14X51	36C50A14G51F	AC500	36							
	14X51	40C50A14G51F	AC500	40							
	14X51	50C50A14G51F	AC500	50							
	14X51	63C40A14G51F	AC500	63							
	RT18-125	22X58	20C50A22G58F	AC500				*20	58	22.2	14
		22X58	25C50A22G58F	AC500				*25			
22X58		32C50A22G58F	AC500	32							
22X58		36C50A22G58F	AC500	36							
22X58		40C50A22G58F	AC500	40							
22X58		50C50A22G58F	AC500	50							
22X58		63C50A22G58F	AC500	63							
22X58		80C50A22G58F	AC500	80							
22X58		100C50A22G58F	AC500	100							
22X58		125C40A22G58F	AC500	*125							





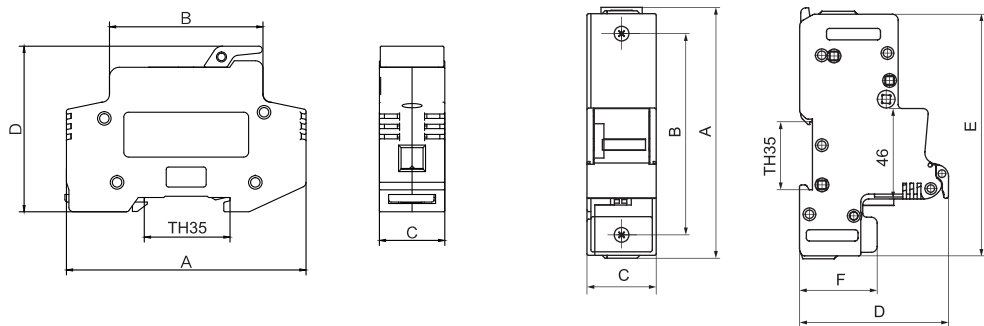
型号 Type	尺码 Size	订货号 Order No.	额定电压(V) Rated Voltage	电流等级(A) Rated Current	尺寸Dimension(mm)					
					A	B	C	D	E	F
RT18-32	10X38	32K50A10F	AC500	32	80.5	62	17.5	62	78.5	43
RT18-32X	10X38	32XK50A10F	AC500	32						



RT18-32,RT18-32X,X代表带指示灯
本产品是模数化可组合2P,3P,4P
RT18-32, RT18-32X, X stands for light Indicator
can be modularized to be 2P,3P,4P



型号 Type	尺码 Size	订货号 Order No.	额定电压(V) Rated Voltage	电流等级(A) Rated Current	尺寸Dimension(mm)					
					A	B	C	D	E	F
RT18-63	14X51	63K69A14F	AC690	63	96	61.5	26.2	66.4	-	-
RT18-63X	14X51	63XK69A14F	AC690	63						
RT18-125	22X58	125K69A22F	AC690	125	128	103	35.5	76	123	39.6
RT18-125X	22X58	125XK69A22F	AC690	125						



RT18-63,RT63X
2P,3P,4P
X:代表指示灯

RT18-63, RT63X
2P,3P,4P
X: stands for light Indicator

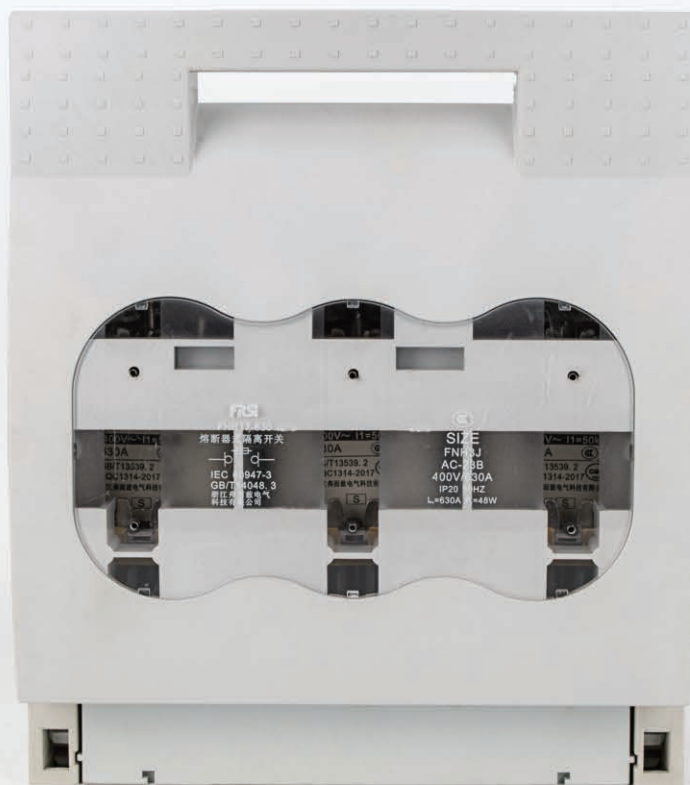
RT18-125,RT125X
2P,3P,4P
X:代表指示灯

RT18-125, RT125X
2P,3P,4P
X: stands for light Indicator

FHR17

熔断器式隔离开关系列

Fuse-Switch-Disconnecter



行业通用 Industrial Design

适用于各种配电行业和JP柜

Suitable for various power distribution equipment and JP cabinets



低能耗设计 Low Power Loss

回路电阻小，能耗功率小

Low circuit resistance, low power consumption



更低温升 Lower Temperature rise

满足国家电网对温升试验要求

Meet the national grid's requirements of temperature rise test



配备熔断体 Geard With Fuse Links

可配用符合GB/T 13539.2和IEC60269.2刀型触头开关

Can be used with blade contact switch which conforms to GB/T 13539.2 and IEC60269.2

产品概述 General Description

FHR17系列熔断器式隔离开关(以下简称开关),适用于交流50Hz、额定电压至690V、约定发热电流至630A的具有高短路电流的配电电路和电动机电路种,用作手动不频繁操作的电源开关、隔离开关和应急开关,并作电路保护之用,但一般不作为直接开闭单台电动机之用。开关造型美观、新颖简洁、结构简单、操作方便。

FHR17 series fuse switch disconnecter is suitable for AC 50Hz, rated voltage up to AC 690V, with a conventional thermal current up to 630A in the distribution circuit and motor circuit with high short circuit current. While it is always used as manual infrequently operated power switch, switch disconnecter and emergency switch to protect circuit, it should not be used to directly turn on or turn off a single motor. FHR17 series fuse switch disconnecter is with excellent design, novel appearance, simple structure and it is convenient to operate.

结构特征 Structure

1. 开关主要由底座、上盖、灭弧罩等部分组成,静触头直接装在底座上,熔断体装在上盖中直接作为动触头刀片用,上盖可沿底座上的支点呈扇形旋转打开,使熔断体从插座中完全拔出,并具有较大的隔离距离,上盖亦可方便地从底座上撤出,便于开关的安装与安全拆换熔断体。

2. 开关中底座、上盖、灭弧罩等均由耐弧塑料压制而成,为全塑型结构,具有良好的机械强度、阻燃性能与介电性能,且结构简单、拆装方便、安全可靠。灭弧罩中装有多片金属灭弧栅,加强了开关的灭弧能力,消除了飞弧的危害,提高了触头的使用寿命。

3. 开关可带负荷操作,可挂接在母线上,也可固定安装在面板上,可插熔断体作动触头用,也可直接带刀片当熔断器式隔离开关用,可带辅助微动开关,用以指示开关的接通与分断。

1. The fuse switch disconnecter is mainly composed of a base, a cover and an arc extinguisher. The static contact is directly mounted on the base while the fuse link is installed in the cover and used as a movable contact. The cover can be rotatingly opened in a limiting range so that the fuse link can be completely removed from the contact socket, as well as having a relatively large isolation distance. The cover can also be easily removed from the base, which is convenient for the installation of the fuse switch disconnecter and safely replacement of the fuse links.

2. The base, cover and arc extinguisher of the fuse switch disconnecter are all compression molded with arc resistant plastic. It has good mechanical strength, flame retardance and dielectric properties. The structure of the fuse switch disconnecter is simple, safe, reliable and convenient to disassemble & assemble. The arc extinguisher is equipped with several metal arc chutes, which enhances the arc extinguishing capability of the fuse switch disconnecter, eliminates the hazard of arcing, and increases the service life of the contacts.

3. The fuse switch disconnecter can be operated under load. The installation way includes hooking on the busbar and mounting on the panel. It can be used as a movable contact with fuse link, or can be used as fuse disconnecter. The auxiliary microswitch is available for indication of the making and breaking.

符合标准 Standard

GB/T14048.3 IEC60947-3

固定式FHR17系列熔断器式隔离开关主要技术参数
Technical Parameters of Panel Fuse-Switch-Disconnecter

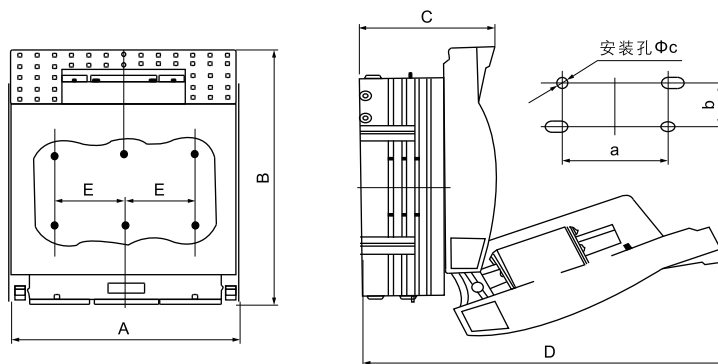
型号规格 Type	FHR17-160	FHR17-250	FHR17-400	FHR17-630	FHR17-800
配熔断体尺码 Fuse Link	NH00或NT00	NH1或NT1	NH2或NT2	NH3或NT3	NH3D
额定绝缘电压 Rated Insulation Voltage(Ui)	800V	1000V	1000V	1000V	1000V
额定耐受冲击电压 Rated Impulse Withstand Voltage	12kV	12kV	12kV	12kV	12kV
工频耐压 Power Frequency Withstand Voltage	2200V	2200V	2200V	2200V	2200V
额定频率 Rated Frequency	50/60Hz	50/60Hz	50/60Hz	50Hz	50Hz
额定工作电压 Rated Operational Voltage(Ue)	AC400V	AC400V	AC400V	AC400V	AC400V
额定工作电流 Rated Operational Current(Ie)	160A	250A	400A	630A	800A
额定通断能力 Rated Making And Breaking Capacities					
额定接通能力 Rated Making Capacity	10Ie	10Ie	10Ie	10Ie	10Ie
额定分断能力 Rated Breaking Capacity	8Ie	8Ie	8Ie	8Ie	8Ie
额定限制短路电流 Rated Conditional Short-circuit current	100kA	100kA	100kA	50kA	50kA
机械性能 Mechanical property					
机械寿命(次) Mechanical Durability(Times)	5000	3000	2000	1500	1500
电寿命(次) Electrical Durability(Times)	1000	600	400	300	300
操作力F(N) Operational Force	< 250	< 300	< 400	< 400	< 400
熔断器损耗功率 Power Lose	12W	23W	34W	48W	48W
辅助微动开关参数 Parameters Of Auxiliary Microswitch	50Hz、AC-15、230V、3A				

开关配用熔断体

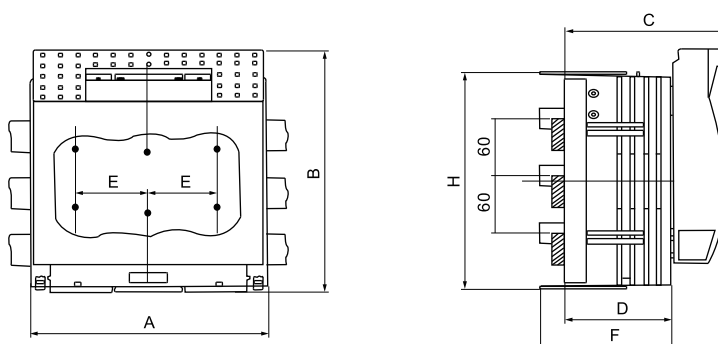
Fuselinks For Fuse-Switch-Disconnecter

约定发热电流(I _{th}) Conventional Thermal Current	配用容断体尺码 Fuse Link	熔断体额定电流(A) Fuse Rated Current
160A	NH00或NT00	2,4,6,10,16,25,32,40,50,63,80,100,125,160
250A	NH1或NT1	80,100,125,160,225,250
400A	NH2或NT2	125,160,200,225,250,300,315,355,400
630A	NH3或NT3	315,355,400,425,500,630
800A	NH3D	800

型号 Type	尺码 Size	订货号 Order No.	额定电压(V) Rated Voltage	电流等级(A) Rated Current	尺寸Dimension(mm)							
					A	B	C(max)	D	E	a	b	Φc
FHR17-160	00	160K40A00F	AC400	160	106	200	83	205	33	66	25	7
FHR17-250	1	250K40A1F	AC400	250	185	247	114	295	57	114	50	11
FHR17-400	2	400K40A2F	AC400	400	210	290	127	340	65	130	50	11
FHR17-630	3	630K40A3F	AC400	630	256	300	145	360	81	162	50	11
FHR17-800	3	800K40A3F	AC400	800	256	300	145	360	81	162	50	11



型号 Type	尺码 Size	订货号 Order No.	额定电压(V) Rated Voltage	电流等级(A) Rated Current	尺寸Dimension(mm)						
					A	B	C	D	E	F	H
FHR17-160/30J	00	160K40A00F	AC400	160	106	200	97	60	33	87	200
FHR17-250/30J	1	250K40A1F	AC400	250	185	247	128	88	57	110	220
FHR17-400/30J	2	400K40A2F	AC400	400	210	290	145	97	65	125	268
FHR17-630/30J	3	630K40A3F	AC400	630	256	300	160	112	81	139	285



FHR6

熔断器式隔离开关系列

Fuse-Switch-Disconnecter



行业通用 Industrial Design

适用于各种配电行业和JP柜

Suitable for various power distribution equipment and JP cabinets



低能耗设计 Low Power Loss

回路电阻小，能耗功率小

Low circuit resistance, low power consumption



更低温升 Lower Temperature rise

满足国家电网对温升试验要求

Meet the national grid's requirements of temperature rise test



配备熔断体 Geard With Fuse Links

可配用符合GB/T 13539.2和IEC60269.2刀型触头开关

Can be used with blade contact switch which conforms to GB/T 13539.2 and IEC60269.2

产品概述 General Description

FHR6系列熔断器式隔离开关(以下简称开关)主要用于额定电压交流400V和660V(45N~62Hz), 约定发热电流至630A的具有高短路电流的配电电路和电动机电路中, 作为电源开关、隔离开关、应急开关、并作电路保护之用, 但一般不作为直接开闭单台电动机之用。

FHR6 series fuse-switch-disconnector is mainly used for rated voltage AC 400V and 660V (45N~62Hz), with a conventional thermal current up to 630A in the distribution circuit and motor circuit with high short circuit current. While it is always used as power switch, switch-disconnector, emergency switch to protect circuit, it should not be used to directly turn on or turn off a single motor.

结构特征 Structure

1.开关主要由底座、上盖、灭弧室等部分组成, 三对夹型触头直接装在底座上, 熔断体装在上盖中直接作为动触头刀片用, 上盖亦可方便地从底座上撤出, 便于开关的安装与安全拆换熔断体。

2.开关中底座、上盖、灭弧室等均由耐弧塑料压制而成, 为全塑型结构, 具有良好的机械强度、阻燃性能与介电性能, 且结构简单、拆装方便、安全可靠。灭弧室中装有金属灭弧栅, 加强了开关的灭弧能力, 消除了飞弧的危害, 提高了触头的使用寿命。

3.开关中底座上具有两组安装孔, 可以满足各种开关柜内及开关柜面板上安装的要求, 开关的两侧可装辅助触头, 发出开关分合状态的指示信号。

1. The fuse-switch-disconnector is mainly composed of a base, an cover and an arc extinguishing chamber. The three pairs of clip-type contacts are directly mounted on the base, and the fuse link is directly installed in the cover as a movable contact blade. The cover can also be conveniently removed from the base, which makes the installation of the fuse switch-disconnector and removal of the fuse link conveniently and safely.

2. The base, cover and arc extinguisher of the fuse-switch disconnector are all compression molded with arc resistant plastic. It has good mechanical strength, flame retardance and dielectric properties. The structure of the fuse switch disconnector is simple, safe, reliable and convenient to disassemble & assemble. The arc extinguisher is equipped with several metal arc chutes, which enhances the arc extinguishing capability of the fuse switch disconnector, eliminates the hazard of arcing, and increases the service life of the contacts.

3. There are two sets of mounting holes on the base of the fuse switch disconnector, which can meet the requirements of installation in various switch cabinets and panels. The auxiliary contacts can be installed on two sides of the switch to indicate the signal of open and dose.

符合标准 Standard

GB/T14048.3 IEC60947-3

FHR6系列熔断器式隔离开关主要技术参数

Main Parameters of Fhr6 Series

型号规格 Type	FHR6-160	FHR6-250	FHR6-400	FHR6-630	FHR6-800
配熔断体尺码 Fuse Link	NH00/NT00	NH1/NT1	NH2/NT2	NH3/NT3	NH3D
额定绝缘电压 Rated Insulation Voltage(Ui)	1000V	1000V	1000V	1000V	1000V
额定耐受冲击电压 Rated Impulse Withstand Voltage	12kV	12kV	12kV	12kV	12kV
额定频率 Rated Frequency	50Hz	50Hz	50Hz	50Hz	50Hz
额定工作电压 Rated Operational Voltage(Ue)	AC400V	AC400V	AC400V	AC400V	AC400V
额定工作电流 Rated Operational Current(Ie)	100A / 160A	200A / 250A	400A	250A / 400A 500A / 630A	630A / 800A
额定通断能力 Rated Making And Breaking Capacities					
额定接通能力 Rated Making Capacity	10Ie	10Ie	10Ie	10Ie	10Ie
额定分断能力 Rated Breaking Capacity	8Ie	8Ie	8Ie	8Ie	8Ie
额定限制短路电流 Rated Conditional Short-Circuit Current	100kA	100kA	100kA	50kA	50kA
机械性能 Mechanical property					
机械寿命(次) Mechanical Durability(Times)	5000	3000	1500	1500	1500
电寿命(次) Electrical Durability(Times)	3000	600	300	300	300
操作力F(N) Operational Force	≤400	≤400	≤400	≤400	≤400

辅助触头(LX19K行程开关)的主要参数

Main Parameters of Auxiliary Contact (LX19K travel switch)

额定工作电压Rated Operational Voltage: AC400V

额定发热电流Rated Thermal Current: 5A

使用类别Application Class: AC-15

触头类型Contact Type: 一常开一长闭Normal Open & Normal Close

符合标准Safety Standard: GB/T14048.5

开关配用熔断体 Fuse-links For Fuse-Switch-Disconnecter

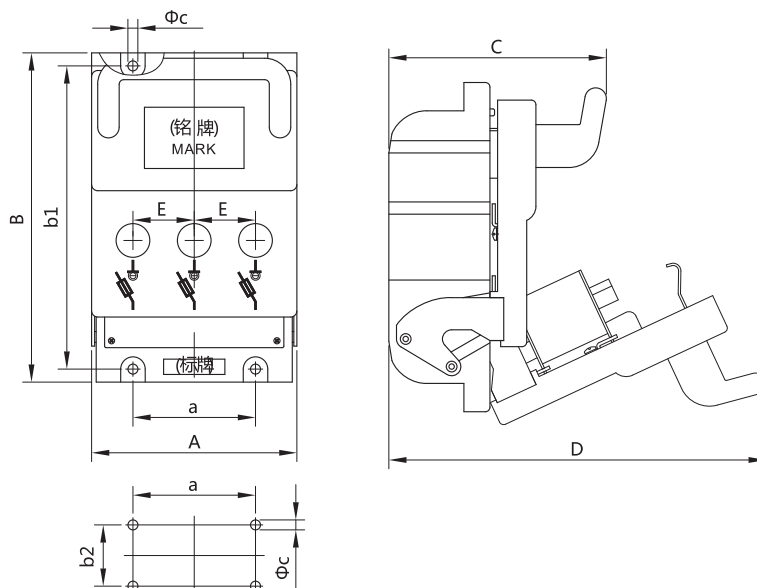
约定发热电流(I _{th}) Conventional Thermal Current	额定工作电压U _e Rated Operational Voltage	配用熔断体尺码 Fuse Link	熔断体额定电流(A) Fuse Rated Current
160A	400V	NH00/NT00	2,4,6,10,16,25,32,40,50,63,80,100,125,160
250A	400V	NH1/NT1	80,100,125,160,200,225,250
400A	400V	NH2/NT2	125,160,200,225,250,300,315,355,400
630A	400V	NH3/NT3	315,355,400,425,500,630
800A	400V	FNH3J	630A
		NH3D	800A

注：当开关用于电动机电路时，允许熔断体的额定电流大于开关的额定工作电流

Note: When the fuse-switch-disconnector is used in the motor circuit, the rated current of the fuse-link is allowed to be larger than the rated operating current of the switch.

外形与安装尺寸 Outline And Installation Dimension

型号 Type	尺码 Size	订货号 Order No.	额定电压(V) Rated Voltage	电流等级(A) Rated Current	尺寸Dimension(mm)								
					A	B	C	D	E	a	b1	b2	Φc
FHR6-160	00	150K40A00F	AC400	150	134	215	142	245	40	80	198	40	6.5
FHR6-250	1	250K40A1F	AC400	250	184	280	162	320	60	120	260	60	8.5
FHR6-400	2	400K40A2F	AC400	400	220	300	194	360	72	144	280	60	8.5
FHR6-630	3	630K40A3F	AC400	630	244	300	194	360	80	160	280	60	8.5
FHR6-800	3	800K40A3DF	AC400	800	244	300	194	360	80	160	280	60	8.5

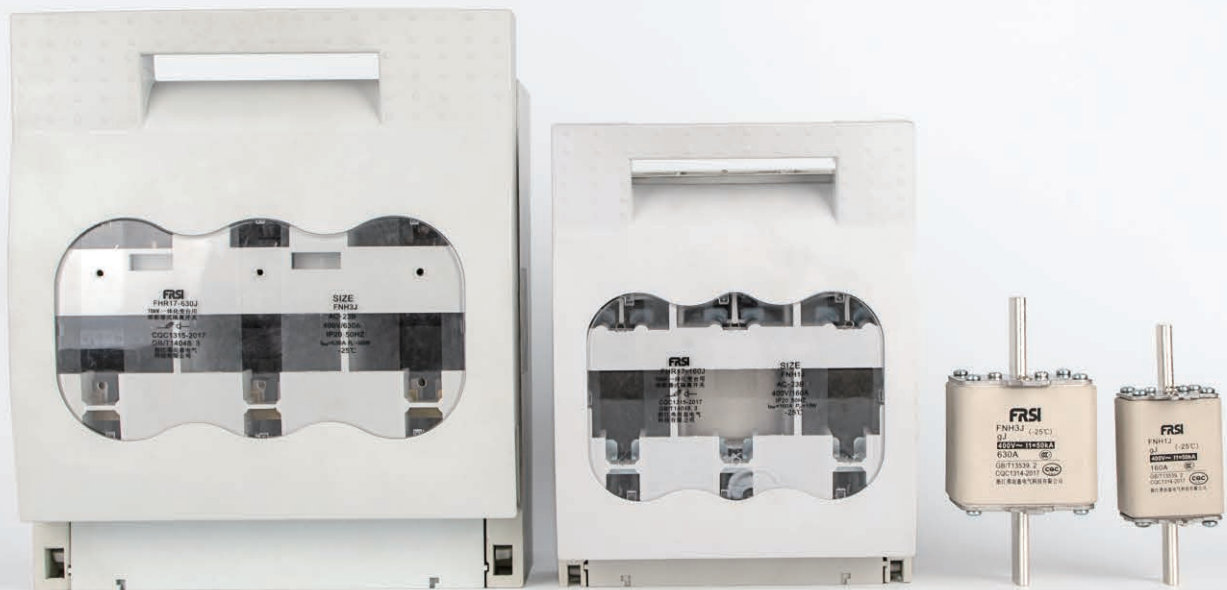


10kV一体化柱上变台

专用熔断器及熔断器式隔离开关

Fuse Links&Fuse-Switch-Disconnecter

For 10kV Concrete Poles Transformer Platform Integrated



低能耗设计 Low Power Loss

回路电阻小，能耗功率小

Low circuit resistance, low power consumption



配备熔断体 Gear With Fuse Links

可配用符合GB/T 13539.2和IEC60269.2刀型触头开关

Can be used with blade contact switch which conforms to GB/T 13539.2 and IEC60269.2



行业通用 Industrial Design

适用于各种配电行业和JP柜

Suitable for various power distribution equipment and JP cabinets



更低温升 Lower Temperature rise

满足国家电网对温升试验要求

Meet the national grid's requirements of temperature rise test

产品概述 General Description

FNHJ系列10kV一体化柱上变台低压熔断体由变截面熔体封装于高强度陶瓷的熔管内，熔管中充满化学处理过的高纯度石英砂作为灭弧介质；熔体采用复杂工艺制作而成，具有分断能力高，限流特性好，温升低功耗等特点；产品可用NH插拔手柄将容断体拔出底座。

The fuse element of FNHJ series 10kV integrated on column platform low voltage fuse link is encapsulated in a high strength ceramic tube which is fully filled with chemically treated high purity quartz sands as an arc extinguishing medium. The fuse link is made by complex technology and it has the characteristics of high breaking capacity, good current limiting characteristics and low power consumption. The product can be pulled out of the base by NH&NT plug handle.

规格参数 Specifications

额定电压Rated Voltage: AC400V

功能等级Utilization Category: gJ

分断能力Breaking Capacity: AC=50kA

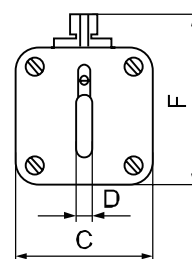
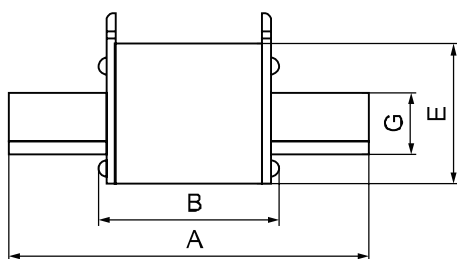
符合标准 Standard

GB/T13539.2 IEC60269-2

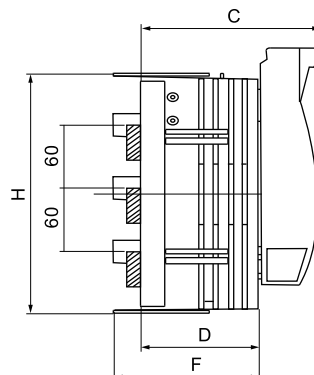
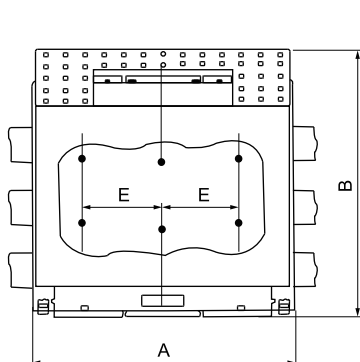
CQC1314-2017 CQC1315-2017



型号 Type	订货号 Order No.	额定电压(V) Rated Voltage	电流等级(A) Rated Current	尺寸Dimension(mm)						
				A	B	C	D	E	F	G
FNH1J	80NH40A1JF	AC400	80	135	75	48	6	48	61	20
	160NH40A1JF	AC400	160							
FNH3J	315NH40A3JF	AC400	315	150	75	71	6	71	83	32
	630NH40A3JF	AC400	630							



型号 Type	尺码 Size	订货号 Order No.	额定电压(V) Rated Voltage	电流等级(A) Rated Current	尺寸Dimension(mm)						
					A	B	C	D	E	F	G
FHR17-160J	1	160K40A1JF	AC400	160	185	241	126	78	57	108	214
FHR17-630J	3	630K40A3JF	AC400	630	255	298	153	106	80	136	265



配用10KV一体化柱上变台用低压熔断体

Fuse Links For 10kV Concrete Poles Transformer Platform Integrated

约定发热电流(I _{th}) Conventional Thermal Current	配用熔断体尺码 Fuse Link	熔断体额定电流(A) Fuse Rated Current
160/80A	FNH1J	80,160
630/315A	FNH3J	315,630

母线式10kV一体化柱上变台用熔断器式隔离开关

Fuse-Switch-Disconnecter For 10kV

型号规格Type	FHR17-160J	FHR17-630J
额定发热电流 Rated Thermal Current	160/80A	630/315A
配熔断体尺码 Fuse Link	FNH1J	FNH3J
额定绝缘电压 Rated Insulation Voltage(U _i)	1000V	1000V
额定耐受冲击电压 Rated Impulse Withstand Voltage	12kV	12kV
工频耐压 Power Frequency Withstand Voltage	2200V	2200V
额定频率 Rated Frequency	50Hz	50Hz
额定工作电压 Rated Operational Voltage(U _e)	AC400V	AC400V
额定工作电流 Rated Operational Current(I _e)	80A	315A
额定通断能力 Rated Making And Breaking Capacity		
额定接通能力 Rated Making Capacity	10I _e	10I _e
额定分断能力 Rated Breaking Capacity	8I _e	8I _e
额定限制短路电流 Rated Conditional Short-circuit Current	50kA	50kA
机械性能 Mechanical Property		
机械寿命(次) Mechanical Durability(Times)	5000	3000
电寿命(次) Electrical Durability(Times)	1000	400
操作力F Operational Force(N)	< 250	< 400
熔断器损耗功率 Power Loss	10W	30W
辅助微动开关参数 Parameters Of Auxiliary Microswitch	50Hz、AC-15、230V、3A	

本目录刊载的型号和规格会因产品更新而变化，恕不另行通知。

本目录中的产品外型、技术说明可能与实际有所不同，请以产品实物和使用说明书为准。

产品种类繁多，详情请咨询我公司或经销商。

Models and specifications in this catalog are subject to change without prior notice.

The product appearance and technical description in this catalogue may be different from the actual situation, please refer to the product and operation instruction.

There are many kinds of products, please consult our company or distributor for details.

FRSI 弗而兹电气

地址：浙江省乐清市北白象镇东大街512号

电话：0577-6198 6868

传真：0577-6198 6869

官网：<http://www.frsidq.com>

www.frsielectric.com

Address: NO.512 Dongda St., Beibaixiang, Yueqing, China

Tel: 0577-6198 6868

Fax: 0577-6198 6869

website: <http://www.frsidq.com>

www.frsielectric.com



欢迎关注官方微信公众号