

THE LEADER OF GROOVING &  
SLITTING MACHINERY

# **SLQ-600S**

**Thin Paperboard Automatic  
Bidirectional Grooving Machine**

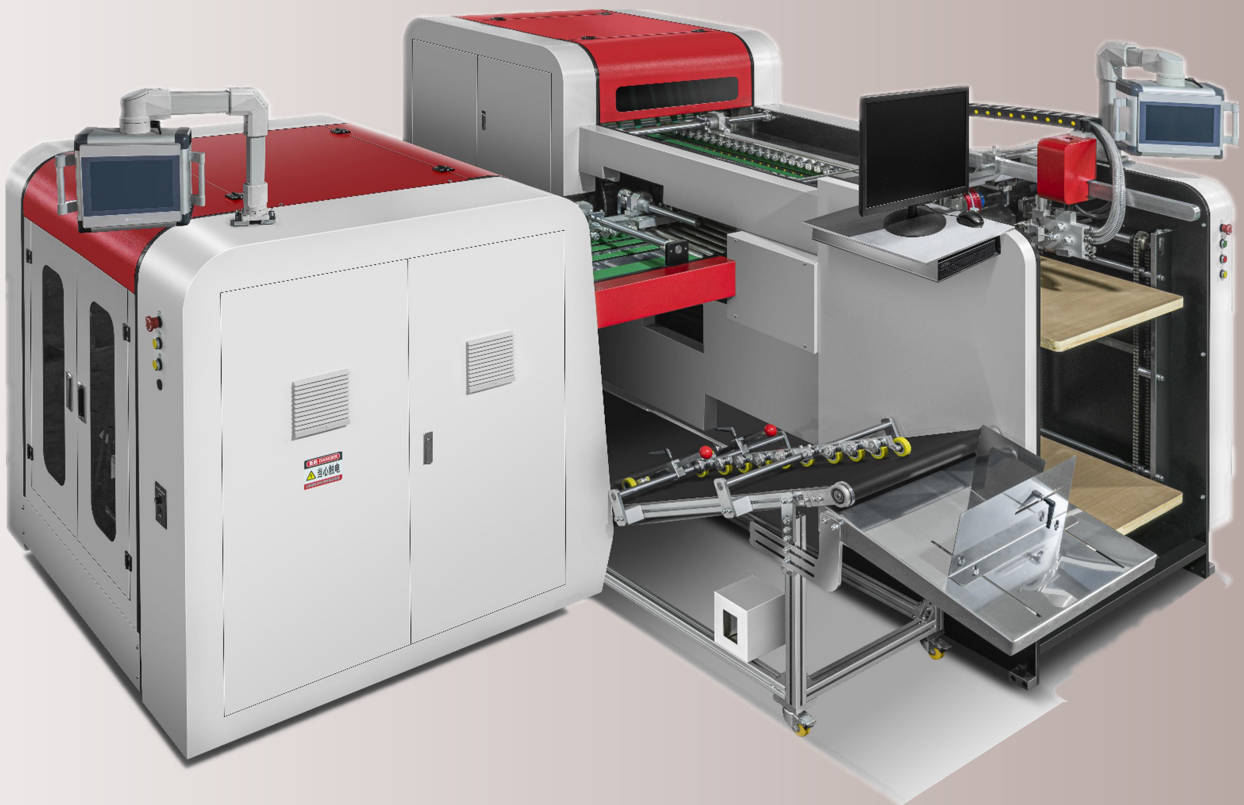
ZHEJIANG SAILI MACHINERY CO.,LTD is the leader of grooving machine, cardboard slitting machine, related package machine and filed for box making.

Our company is located in Wenzhou City, covering an area of 6,280 square meters, with a building area of 2,800 square meters. With 50-million-worth fixed assets, we employ over 210 personnel, including 50-60 professional technical talents and 3 senior engineers. Through over 20 years of rapid development, our company has adopted a streamline modern management operation system covering R&D, manufacturing and distribution network. We supply technical support, installation guidance, and other services. Our products enjoy a high quality reputation and have been warmly received by our customers.



# SLQ-600S

## Thin Paperboard Automatic Bidirectional Grooving Machine



## Main Advantages:

NO.1:Feida Feeding System(to avoid the scratch problems of material surface).

NO.2:Digital indicator adjust the grooving depth.

NO.3:Scroll flipping system is with high fast , high stability and also can avoid the scratch problems of paper surface.

NO.4:Waste deliver in one side: Remove the waste in one side of the machine, increase the production capacity, more stability.

NO. 5:Automatic collector holder for final product: to save time and man power.

## Description of machine:

SLQ-600S Bidirectional Automatic grooving machine, it is new technology with new developed on basic of much experience of grooving technology , it is specially making V shape on thin paperboard,film paperboard, used for the material thickness from 200gsm to 350gsm.

It make V shape on specially paperboard in one time, help user to save man power, increase production capacity, high precision, and meanwhile delivery the grooving waste to machine size automatically, and collecting the final product automatically.

It always used for making different package box, such as lid&base boxes, rigid box, gift box, mobile phone boxes, etc.

**Technical parameter:**

Thickness	200-350g
Material Size of 1 <sup>st</sup> Step:	180-600mm
Material Size of 2 <sup>nd</sup> Step:	180-500mm
Speed:	80pcs/min(300*300mm)
Grooving Lines:	6 lines(1 st Step), 6 lines(2nd Step)
Grooving Line accuracy	±0.1mm
Grooving Angle	90°-115°adjustable
Power	13.5KW
Number of Knife Row	3 rows for knife
Feeding Type	FEIDA Air Feeding System
Platform Type of Adding Paper	Upper and lower Platform (Save time of paper feeding)
Machine Dimension:	3076*3253*1880mm
Machine Weight:	5200KG
Certification:	CE, ISO9001

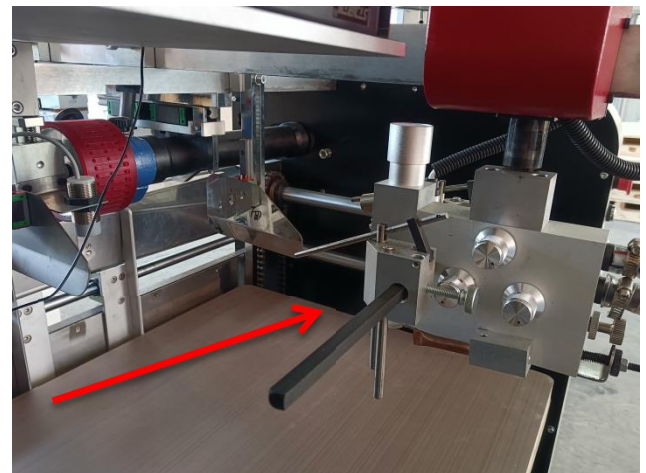


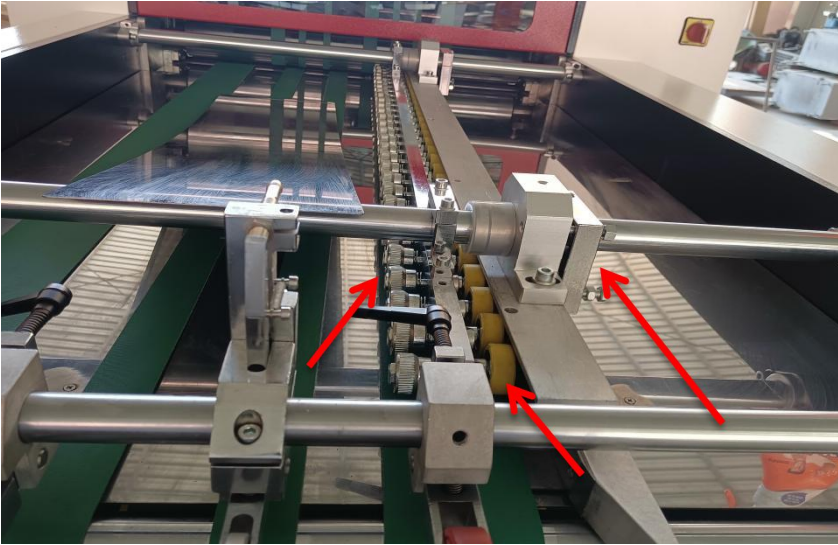
## Machine Standard configuration list:

Roller material:	Shanghai BAOSTEEL
Frequency changer:	Hope brand (If customer need change the brand, we also can use Schneider brand or another brand)
Low-voltage apparatus:	Eaton Muller brand
Machine main motor:	CHENGBANG,TAIWAN BRAND
Belt:	XIBEK,CHINA
Knife:	Special Tungsten alloy steel
Collector belt motor	ZHONGDA brand,China

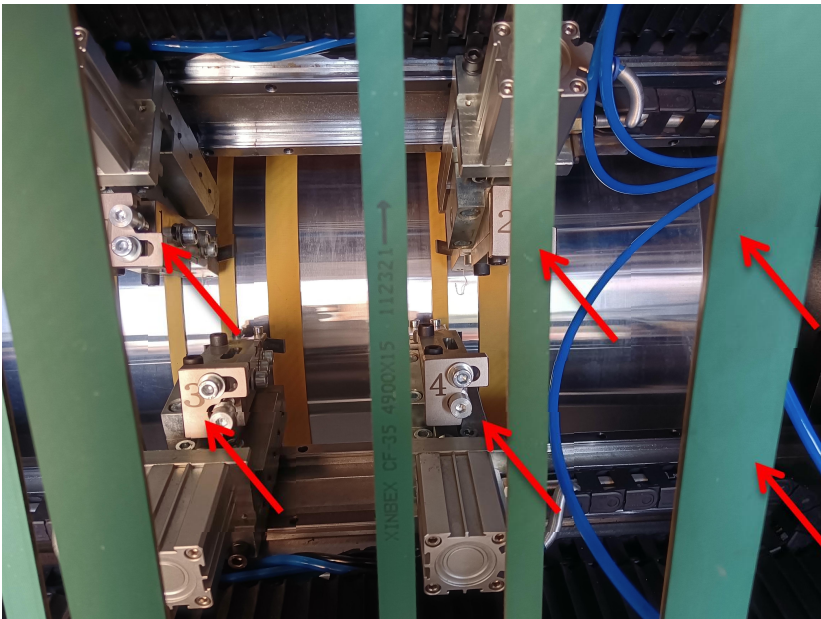


## FEIDA FEEDING SYSTEM





## Correcting Belt System



**SAILI is the first drum  
designer in the world:**

**12 sets knife holders**

**1)6 sets 90 degree knife  
holders in 1<sup>st</sup> Step.**

**2)6 sets 90 degree knife  
holders in 2<sup>nd</sup> Step.**

**Standard Machine parts together with machine for user:**

Name	Qty
Grinder of knife	1ea
Tool box <i>((including 1set Allen wrench, straight screwdriver of 4 inch, open spanner, adjustable wrench, grater))</i>	1pc
Grooving blade	20pcs

**Grinder of knife  
together with machine**





## Grooving blade



Blade Lifetime: the blade usually can groove 10000-20000pcs boards after first time sharpening. And 1pc blade can be sharpened about 20-25 times under good using condition.

## SAILI Thin Paperboard Grooving Case

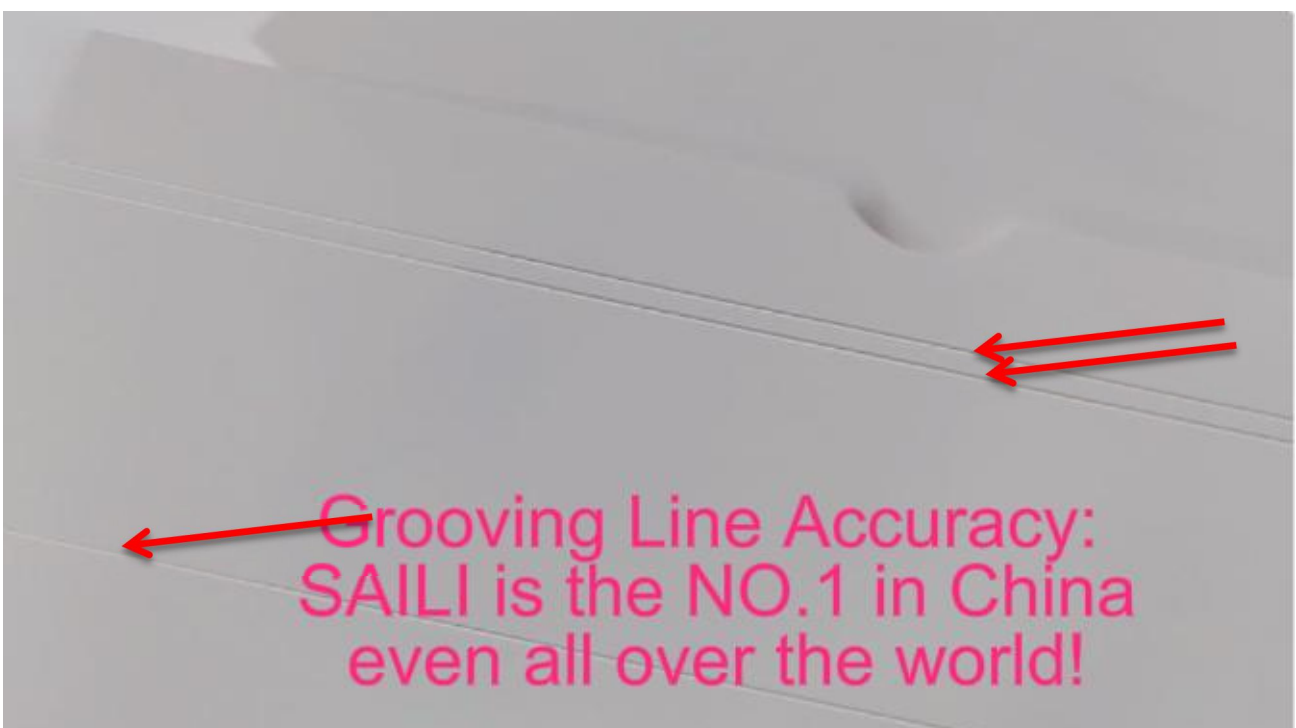




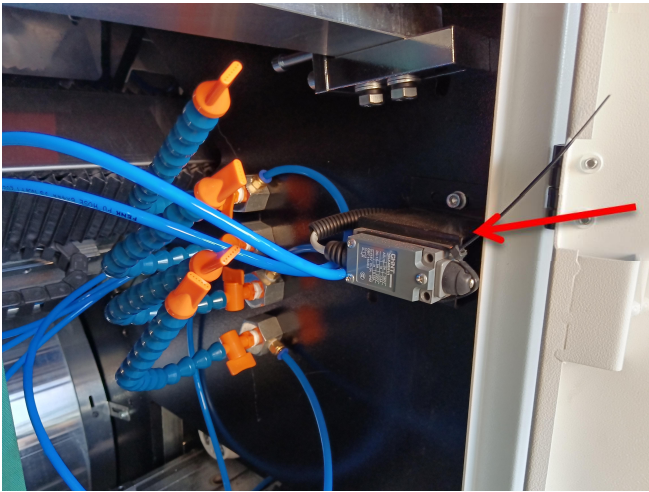


**Adopt the printing quality of rubber roller, no manufacturer has such wonderful equipment.**

**SAILI ALWAYS FOCUS ON THE BEST GROOVING CRAFT!**







## Safe Set:

When you open the door,  
the machine will stop  
working.

## Hand wheel:

Used to adjust upper and lower  
knife holders on 2 rows girders  
by turning to its direction.







## Workshop:

## Remark:

Delivery time: 25- 35 days after receiving the deposit

Payment terms: 30% TT in advance, 70% payment before delivery

Installation: If the buyer need our factory to sent engineer go to install, the buyer will cover all expense of engineers visiting including round-trip tickets, local transportation, meals and loading expenses.



## SAILI CRAFT IN WORKING





