

THE LEADER OF GROOVING &
SLITTING MACHINERY,PACKAGE MACHINE

KLQ-600BL

**Automatic Bidirectional MDF
Grooving Machine**

ZHEJIANG SAILI MACHINERY CO.,LTD

ZHEJIANG SAILI MACHINERY CO.,LTD is the leader of grooving machine, cardboard slitting machine, related package machine and filed for box making. Our company is located in Wenzhou City, covering an area of 6,280 square meters, with a building area of 2,800 square meters. With 50-million-worth fixed assets, we employ over 210 personnel, including 50-60 professional technical talents and 3 senior engineers. Through over 20 years of rapid development, our company has adopted a streamline modern management operation system covering R&D, manufacturing and distribution network. We supply technical support, installation guidance, and other services. Our products enjoy a high quality reputation and have been warmly received by our customers.



KLQ-600BL

Bidirectional MDF/ Gray Board Grooving Craft
Standard Material Thickness:1.0-3.0mm



KLQ-600BL is automatic grooving machine, it is specially designed for notching V shape grooving or U shape on gray board and MDF.

High accuracy, High stability, High precision.

Help the user to produce the hardcover product, case maker, different kinds of box, etc.

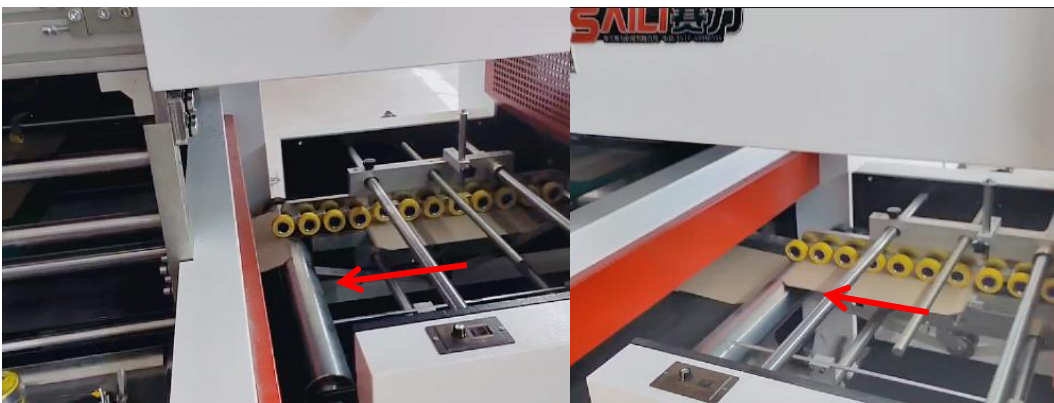
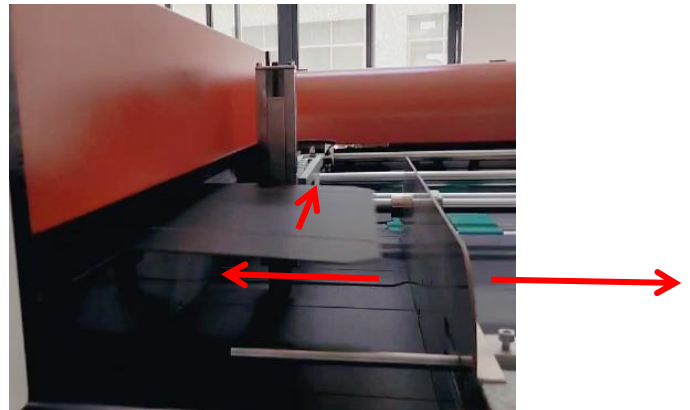
Technical Parameters:

<i>Model no.:</i>	<i>KLQ-600BL</i>
<i>Material size of 1st Step:</i>	150-800mm
<i>Material size of 2nd Step:</i>	150-600mm
<i>Thickness:</i>	<i>1.0-3.0mm</i>
<i>Grooving Line Accuracy:</i>	<i>±0.1mm</i>
<i>Speed:</i>	<i>130 pcs/min(200*200mm)</i>
<i>Groove degree:</i>	<i>90°-130° adjustable</i>
<i>Power:</i>	<i>5.2kw</i>
<i>Grooving lines Of 1st Step:</i>	<i>2 rows Beams, groove 8 lines</i>
<i>Grooving lines Of 2nd Step:</i>	<i>One row Beam, groove 4 lines</i>
<i>Feeding Method:</i>	<i>Belt Feeding</i>
<i>Waste Delivery Method:</i>	<i>Come Out From End Back Part by Belt</i>
<i>Machine size:</i>	<i>3663*2416*1525mm</i>
<i>Weight:</i>	<i>2500KG</i>
<i>Voltage:</i>	<i>380V/3 phase/50HZ</i>

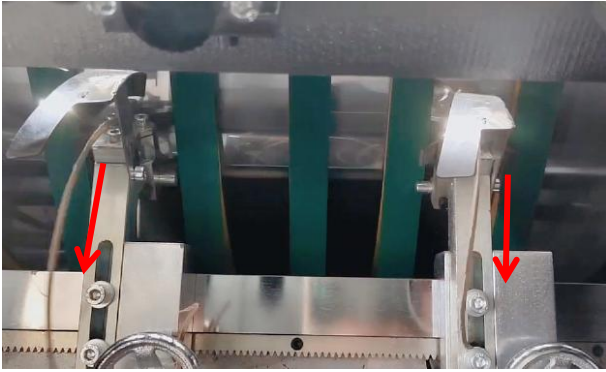


Automatic Stack Feeding:
allow one board to go through only

1st Grooving Step:
Can adjust the distance according to board size



Automatic from 1st step to 2nd Step:
SAVE YOUR A LOT OF TIME AND LABOR



The waste will come out automatically.

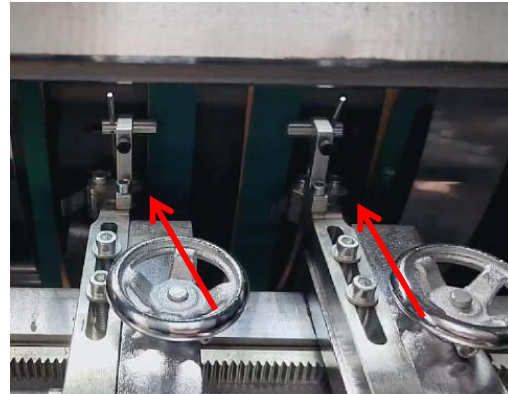
Note: if there is too much waste on beams or knife, you'd better stop the machine then clear them from time to time.

Special Knife Holders:

8 sets on 1st Step and 4 sets on 2nd Step

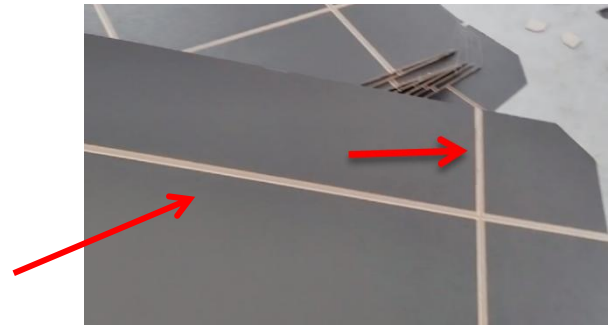
Total: 12 sets 90 degree knife holders

(Standard), can custom



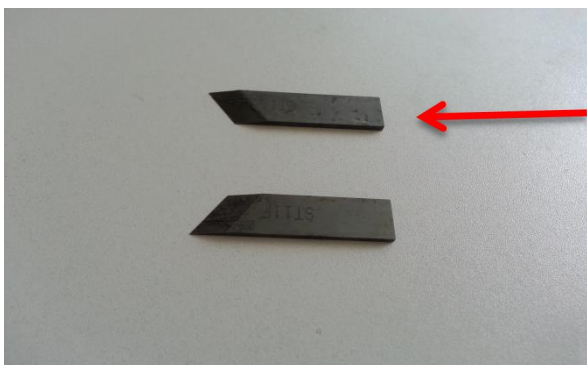
Collection Holder to collect board in stack

MDF Grooving Effect



Grinder of knife together with machine

Grooving blade



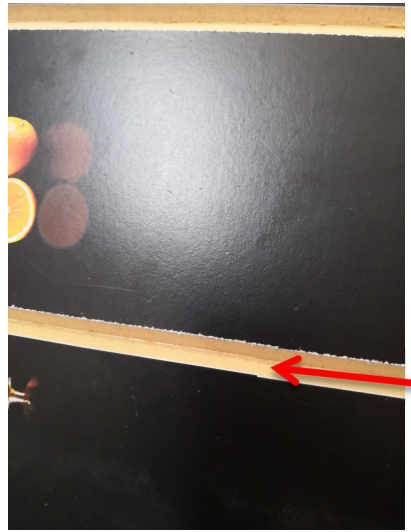
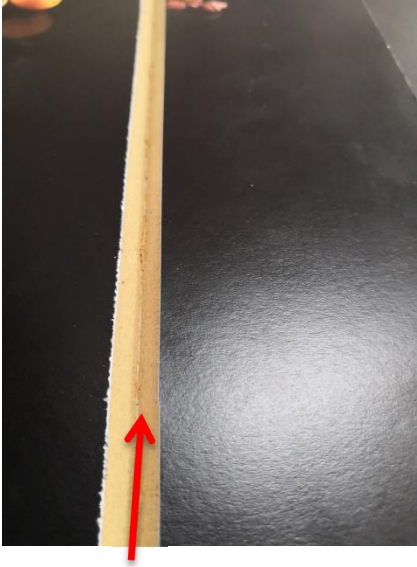
Blade Life: usually the blade can work 10000pcs after the first time sharpening. And 1pc blade can be sharpened about 25-30 times under good using.

Standard Machine parts together with machine for user:

Name	Qty
Grinder of knife	1ea
Tool box <i>((including 1set Allen wrench, straight screwdriver of 4 inch, open spanner, adjustable wrench, grater))</i>	1pc

Machine Standard configuration list:

Roller material:	Shanghai BAOSTEEL
Frequency changer:	Hope brand (If customer need change the brand, we also can use Schneider brand or another brand)
Low-voltage apparatus:	Eaton Muller brand
Machine main motor:	CHENGBANG, TAIWAN BRAND
Belt:	XIBEK, CHINA
Knife:	Special Tungsten alloy steel
Collector belt motor	ZHONGDA brand, China



Workshop



Remark:

Delivery time: within 7-25 days after receiving the deposit

Payment terms: 30% TT in advance, 70% payment before delivery

Installation: If the buyer need our factory to sent engineer go to install, the buyer will cover all expense of engineers visiting including round-trip tickets, local transportation, meals and loading expenses.