

THE LEADER OF GROOVING &
SLITTING MACHINERY,PACKAGE MACHINE

SLZ-938H

**Automatic Digital grooving machine with
waste cleaning system automatically**



ZHEJIANG SAILI MACHINERY CO.,LTD

ZHEJIANG SAILI MACHINERY CO.,LTD is the leader of grooving machine, cardboard slitting machine, related package machine and filed for board making.

Our company is located in Wenzhou City, covering an area of 6,280 square meters, with a building area of 2,800 square meters. With 50-million RMB fixed assets, we employ over 210 personnel, including 50-60 professional technical talents and 3 senior engineers. Through over 20 years of rapid development, our company has adopted a streamline modern management operation system covering R&D, manufacturing and distribution network. We supply technical support, installation guidance, and other services. Our products enjoy a high quality reputation and have been warmly received by our customers.



SLZ-938H

Used for different kinds of material

Description of machine:

Main function:

1. Feeding with more smoothly and more higher speed
2. Automatically adjust the blade , automatic correction, high precision
3. To design the parts with humanity of adjustment belt and knife, to operate more conveniently and safety.
4. In order to achieve high accuracy of cutting, we used the Japan electrical part to control the magnet. It brings higher speed and stability.
5. Automatically clear the waste, which saves labor and improves the efficiency.
6. Digital display for adjusting the grooving knife, it is more easy and surely for users to get the exactly depth and position of grooving.

Description of goods:

Material: cardboard, thin board, paper board for V shape.

it is usually used for box making, such as mobile phone box, gift box, rigid box,shoe box,jewellery box, chocolate box and so on.

Technical Parameters:

<i>Model no.:</i>	<i>SLZ-938H</i>
<i>Material size:</i>	<i>150-650mm(L); 80-450mm(W)</i>
<i>Gray Board Thickness:</i>	<i>600g---3.5mm</i>
<i>Framed Paperboard Thickness:</i>	<i>400-600g</i>
<i>MDF Thickness:</i>	<i>≤3.0mm</i>
<i>Grooving Line Accuracy:</i>	<i>±0.05mm</i>
<i>Beam:</i>	<i>2 beams,3 rows</i>
<i>Working Speed:</i>	<i>110-120pcs/min(200*200mm)</i>
<i>Groove degree:</i>	<i>90°-130° adjustable</i>
<i>Power:</i>	<i>4.0kw</i>
<i>Max grooving lines:</i>	<i>12 grooving lines max</i>
<i>Knife holder standard :</i>	<i>12 sets knife holder(7set of 90° +5 set of 120°)</i>
<i>V shape min distance:</i>	<i>0:0(no limited)</i>
<i>Grooving knife position device:</i>	<i>Digital indicator</i>
<i>Machine size:</i>	<i>4500*2904*2015mm</i>
<i>Weight:</i>	<i>3000KG</i>
<i>Voltage:</i>	<i>380V/3 phase/50HZ</i>
<i>Standard Spare Parts:</i>	<i>1. 1 ea grinder of knfie 2. 1 pcs tool box(including 1set Allen wrench, straight screwdriver of 4 inch, open</i>

SAILI

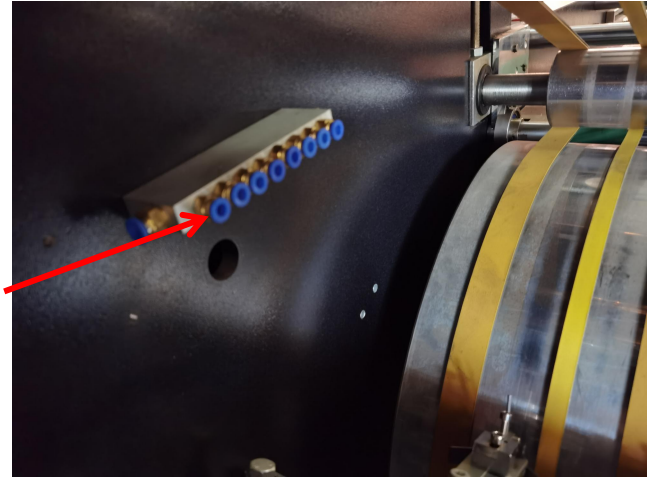
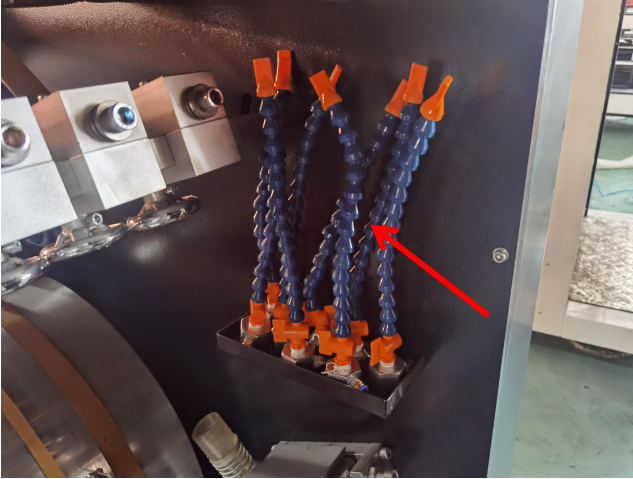
ZHEJIANG SAILI MACHINERY CO.,LTD

spanner,adjustable wrench,grater,instruction manual of inverters)

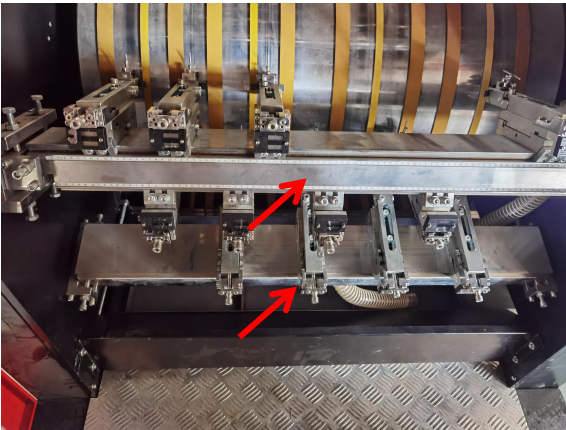


Machine Pictures





Automatic Waste Blowing Tubes are assembled in machine.

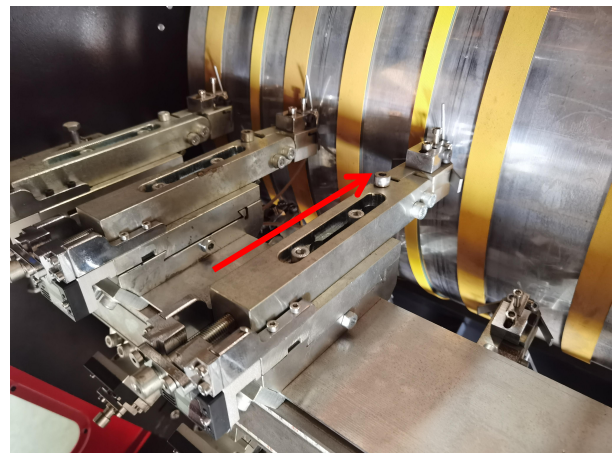


**Two beams, 3 rows
girders**

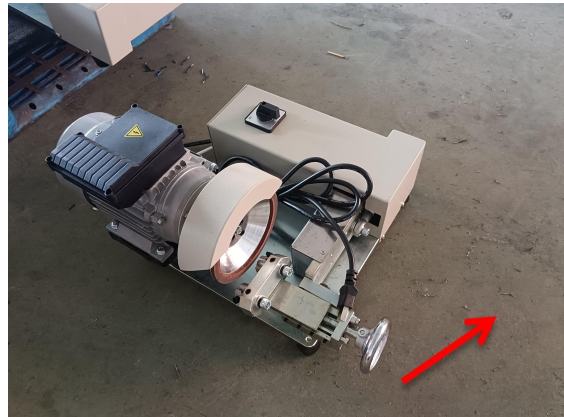
**12 sets Knife Holders installed
in machine:**

7 sets 90 degree +5 sets 120 degree

(can custom)



Grinder of knife
together with machine



Grooving blade

Blade Life: usually the blade can work for 10000-20000pcs after the first time sharpening. And 1pc blade can be sharpened about 25-30 times under good using.



Standard Machine parts together with machine for user:

Name	Qty
Grinder of knife	1ea
Tool box <i>((including 1set Allen wrench, straight screwdriver of 4 inch, open spanner, adjustable wrench, grater))</i>	1pc

Sample of V shape on board material:



Workshop:



Remarks:

Delivery time: within 15-30 days after receiving the deposit

Payment terms: 30% TT in advance, 70% payment before delivery

Installation: If the buyer need our factory to sent engineer go to install, the buyer will cover all expense of engineers visiting including round-trip tickets, local transportation, meals and loading expenses.

SAILI CRAFTS HELP YOUR PACKAGING GO FARTHER!

